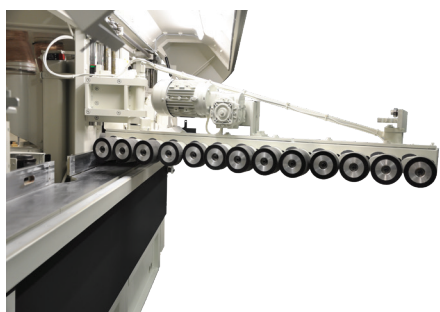




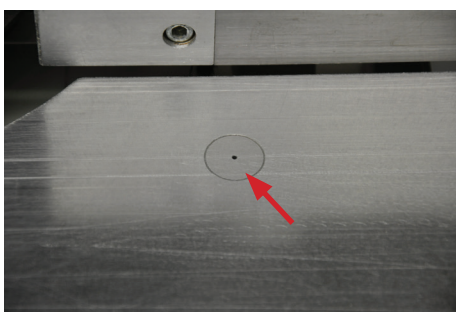
PROFILE MOULDER FOR ONE OR SEVERAL DIFFERENT WINDOW OR DOOR TYPES

The Profil Control is produced with one or more spindles. With the tool splitting technology tools from all the spindles can be combined with each other. The machine can be equipped with a glass bead saw, a hardware groove and top or/and bottom slot cutters.

The Profil Control can be entirely automated and be combined with a "Pentho Control" in order to come to a complete window line



The feeding device has wear resistant wheels. Every wheel is separately spring-loaded.



Air jets in the table bed create an air film between the timber and the table for a better through feed



On the shaft(s) different tools can be installed



7" touch panel for the full operation of the machine

Possibility for stormproofing sashes with "jump head" to avoid breakout



PROFIL CONTROL



TECHNICAL DETAILS

FRAME

7" touch panel:	For the operation of the machine Selecting of all motors by the panel
Construction:	Combined self supporting frame with a cage construction
Security:	conform CE.

TABLE

Guiding:	80 mm high 1st fence manual adjustable 4mm
Through feed:	air jets in table for better through feed of timber
Cleaning:	compressed air system between table and fence
Width:	160 mm
Extension table:	for storm proofing

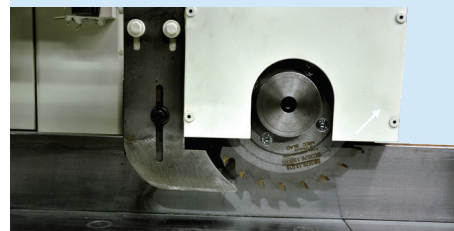
VERTICAL SPINDLE

Motor:	11 kW
RPM:	6000
Suspension:	dove tail
Positioning:	vertical CNC positioned with ball circulating screw horizontal fix; on/off or CNC-positioned option
Spindle length:	300 mm with Prolock or 545 mm with top bearing
Spindle Ø:	50 mm
Tool:	Min. zero Ø 120 mm Max. Ø = zero Ø + 90 mm, max. 240 mm
Extraction:	Ø 180 mm

FEEDING DEVICE

Speed:	Adjustable between 2 - 12 m/min
Vertical:	20 to 140 mm
Rolers:	wear resistant, Ø 100 mm, every 103 mm number determined by composition machine, min. 13 pieces
Positioning:	manual; CNC-positioned option

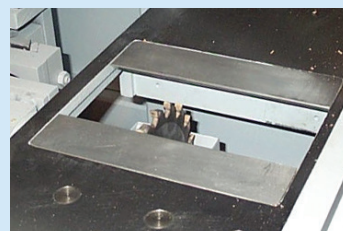
EXTRA MODULES



Glass bead saw



Hardware groove



Slot cutters



Automatic timber return system



15" touch panel with separate control console